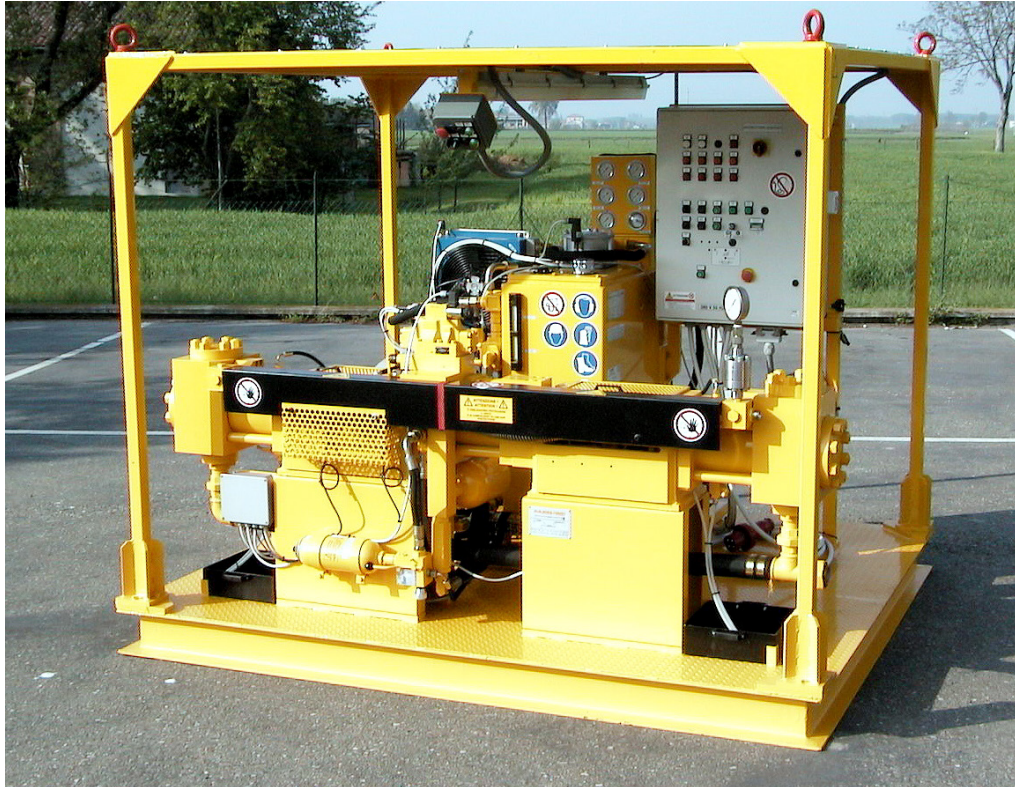


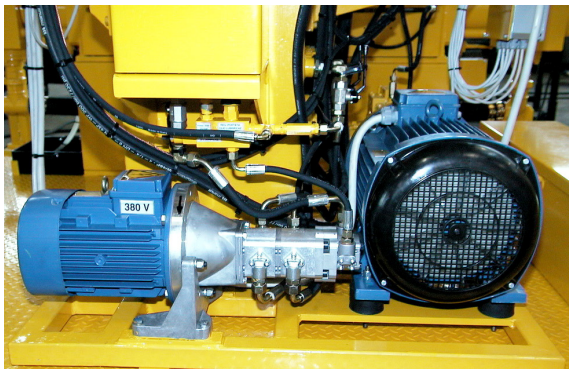
**INIETTORE -
INJECTOR -**

L 250

18,5 kw - 30 kw - 55 kw

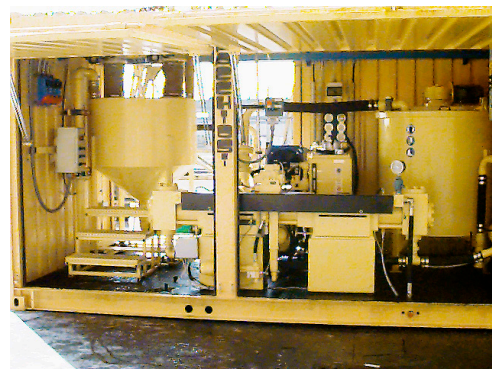


INIETTORE - INJECTOR



**NOTE TECNICHE
TECHNICAL NOTES**

www.drillpac.com



INIETTORE L 250

INJECTOR L 250

CARATTERISTICHE TECNICHE

TECHNICAL CHARACTERISTICS

ALLESTIMENTO

EQUIPMENT

SU SLITTA

ON SKID

- Altezza 2130 mm
- Larghezza 2500 mm
- Profondità 2100 mm
- Peso 3200 kg

- Height 2130 mm
- Width 2500 mm
- Depth 2100 mm
- Weight 3200 kg

IN CONTAINER CON MISCELATORE ED AGITATORE

IN CONTAINER WITH MIXER AND STIRRER

- Altezza 2575 mm
- Larghezza 6060 mm
- Profondità 2435 mm
- Peso 9200 kg

- Height 2575 mm
- Width 6060 mm
- Depth 2435 mm
- Weight 9200 kg

MOTORI

ENGINE

TIPO	ELETRICO	PRIMARIO
• Potenza		P = 55 kW P = 30 kW P = 18,5 kW
• Voltaggio		380/660 V
• Frequenza		50 Hz
• Giri		1450 giri/min

TYPE	ELECTRICAL	PRIMARY
• Power		P = 55 kW P = 30 kW P = 18,5 kW
• Voltage		380/660 V
• Frequency		50 Hz
• Revolutions		1450 rpm

TIPO	ELETRICO	
• Potenza		P = 4 kW
• Voltaggio		220/380 V
• Frequenza		50 Hz
• Giri		1450 giri/min

TYPE	ELECTRICAL	
• Power		P = 4 kW
• Voltage		220/380 V
• Frequency		50 Hz
• Revolutions		1450 rpm

IMPIANTO IDRAULICO

HYDRAULIC PLANT

- Pompa principale a cilindrata variabile P costante
- Portata pompa principale 0 - 100 lt/min
- Massima pressione pompa 300 bar
- Pompa pilotaggio - lubrificazione Ingranaggi
- Capacità serbatoio 200 lt
- Scambiatore di calore

- Main variable displacement pump Constant P
- Main pump flow 0 - 100 lt/min
- Pump max pressure 300 bar
- Pilot pump - lubrication Gears
- Fuel tank capacity 200 lt
- Heat exchanger

INIETTORE

INJECTOR

- | | | | | |
|-------------------------------|-------|-------|-------|--------|
| • Diametro pistone Ø | 60 | 70 | 110 | mm |
| • Corsa pistone | 230 | 230 | 230 | mm |
| • N° di battute max | 60 | 60 | 60 | n°/min |
| • Portata massima | 80 | 110 | 260 | lt/min |
| • Pressione massima | 330 | 245 | 100 | bar |
| • Portata variabile | 0-80 | 0-110 | 0-260 | lt/min |
| • Pressione variabile | 0-330 | 0-245 | 0-100 | bar |
| • Velocità pistone regolabile | | | | |

- | | | | | |
|---------------------------|-------|-------|-------|--------|
| • Piston diameter Ø | 60 | 70 | 110 | mm |
| • Piston stroke | 230 | 230 | 230 | mm |
| • Max cycle n° | 60 | 60 | 60 | n°/min |
| • Max flow | 80 | 110 | 260 | lt/min |
| • Max pressure | 330 | 245 | 100 | bar |
| • Variable flow | 0-80 | 0-110 | 0-260 | lt/min |
| • Variable pressure | 0-330 | 0-245 | 0-100 | bar |
| • Adjustable piston speed | | | | |

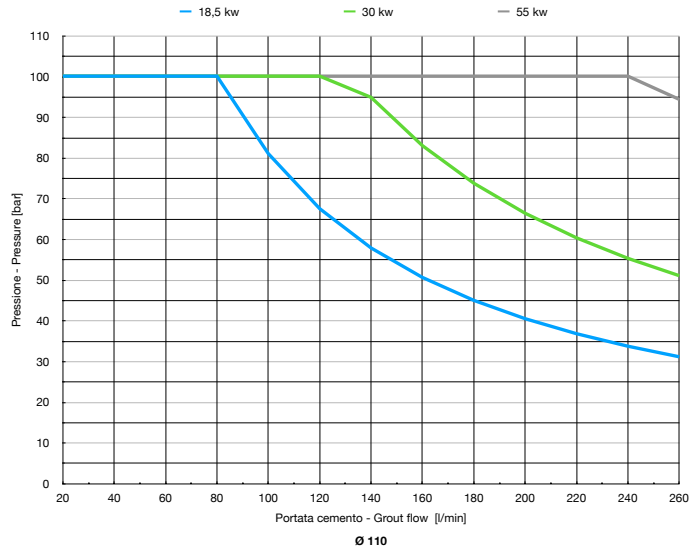
COMANDI

COMMANDS

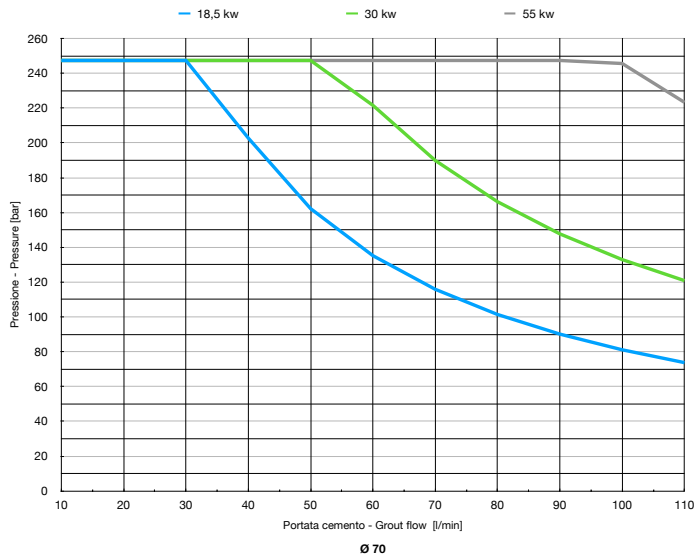
- Pulsantiera di comando iniettore a distanza

- Injection remote control panel

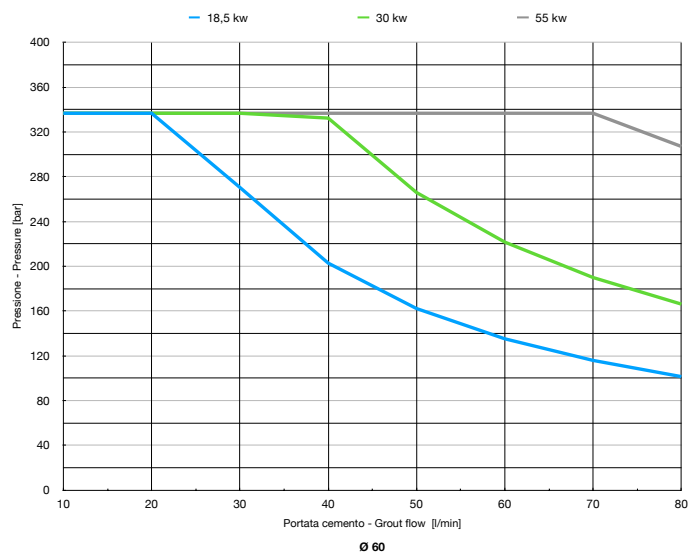
PORTATA CEMENTO - GROUT FLOW | PRESSIONE - PRESSURE | PISTONE - PISTON Ø 110



PORTATA CEMENTO - GROUT FLOW | PRESSIONE - PRESSURE | PISTONE - PISTON Ø 70



PORTATA CEMENTO - GROUT FLOW | PRESSIONE - PRESSURE | PISTONE - PISTON Ø 60



ROCK - SOIL TECHNOLOGY AND EQUIPMENTS



**COMPANY WITH
QUALITY SYSTEM
CERTIFIED BY DNV GL
= ISO 9001:2015 =**

Branches

AMERIQUE DU NORD PACCHIOSI INC, Canada

PACCHIOSI DRILL USA INC, USA

Drill Pac S.r.l. – Società soggetta a direzione e coordinamento di Ghella S.p.A
Sede Legale: Via Pietro Borsieri, 2/a - 00195 Roma (RM)
Tel. +39 06 45603.1 – Fax +39 06 45603040 – e-mail: info@drillpac.com
Sede Operativa: Frazione Borgonovo, 22 – 43018 Sissa Trecasali (PR)
Tel. +39 0521 379003 – Fax +39 0521 879922 - Sito web: www.drillpac.com