

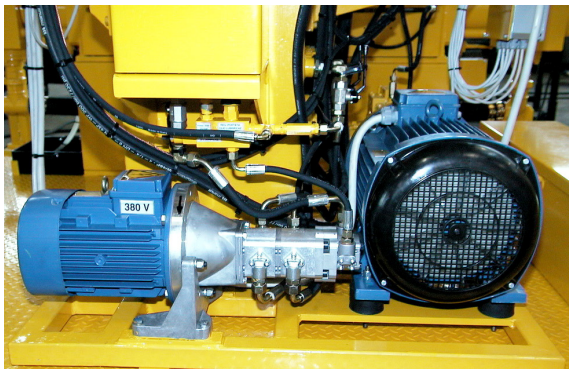
**INIETTORE -  
INJECTOR -**

**L 250**

18,5 kw - 30 kw - 55 kw

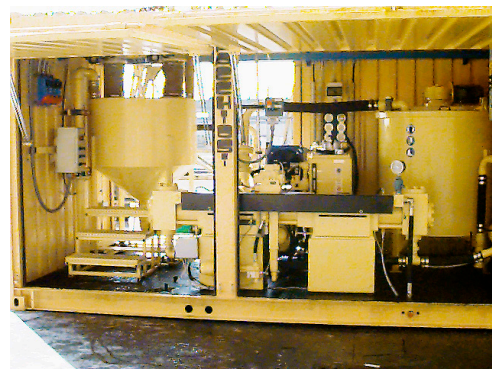


**INIETTORE - INJECTOR**



**NOTE TECNICHE  
TECHNICAL NOTES**

[www.drillpac.com](http://www.drillpac.com)



## INIETTORE - INJECTOR

## L 250

### INIETTORE L 250

### INJECTOR L 250

#### CARATTERISTICHE TECNICHE

#### TECHNICAL CHARACTERISTICS

##### ALLESTIMENTO

##### EQUIPMENT

###### SU SLITTA

###### ON SKID

• Altezza	2130 mm
• Larghezza	2500 mm
• Profondità	2100 mm
• Peso	3200 kg

• Height	2130 mm
• Width	2500 mm
• Depth	2100 mm
• Weight	3200 kg

###### IN CONTAINER CON MISCELATORE ED AGITATORE

###### IN CONTAINER WITH MIXER AND STIRRER

• Altezza	2575 mm
• Larghezza	6060 mm
• Profondità	2435 mm
• Peso	9200 kg

• Height	2575 mm
• Width	6060 mm
• Depth	2435 mm
• Weight	9200 kg

#### MOTORI

#### ENGINE

TIPO	ELETTRICO	PRIMARIO
• Potenza		P = 55 kW P = 30 kW P = 18,5 kW
• Voltaggio		380/660 V
• Frequenza		50 Hz
• Giri		1450 giri/min

TYPE	ELECTRICAL	PRIMARY
• Power		P = 55 kW P = 30 kW P = 18,5 kW
• Voltage		380/660 V
• Frequency		50 Hz
• Revolutions		1450 rpm

TIPO	ELETTRICO	
• Potenza		P = 4 kW
• Voltaggio		220/380 V
• Frequenza		50 Hz
• Giri		1450 giri/min

TYPE	ELECTRICAL	
• Power		P = 4 kW
• Voltage		220/380 V
• Frequency		50 Hz
• Revolutions		1450 rpm

#### IMPIANTO IDRAULICO

#### HYDRAULIC PLANT

• Pompa principale a cilindrata variabile	P costante
• Portata pompa principale	0 - 100 lt/min
• Massima pressione pompa	300 bar
• Pompa pilotaggio - lubrificazione	Ingranaggi
• Capacità serbatoio	200 lt
• Scambiatore di calore	

• Main variable displacement pump	Constant P
• Main pump flow	0 - 100 lt/min
• Pump max pressure	300 bar
• Pilot pump - lubrication	Gears
• Fuel tank capacity	200 lt
• Heat exchanger	

#### INIETTORE

#### INJECTOR

• Diametro pistone Ø	60	70	110	mm
• Corsa pistone	230	230	230	mm
• N° di battute max	60	60	60	n°/min
• Portata massima	80	110	260	lt/min
• Pressione massima	330	245	100	bar
• Portata variabile	0-80	0-110	0-260	lt/min
• Pressione variabile	0-330	0-245	0-100	bar
• Velocità pistone regolabile				

• Piston diameter Ø	60	70	110	mm
• Piston stroke	230	230	230	mm
• Max cycle n°	60	60	60	n°/min
• Max flow	80	110	260	lt/min
• Max pressure	330	245	100	bar
• Variable flow	0-80	0-110	0-260	lt/min
• Variable pressure	0-330	0-245	0-100	bar
• Adjustable piston speed				

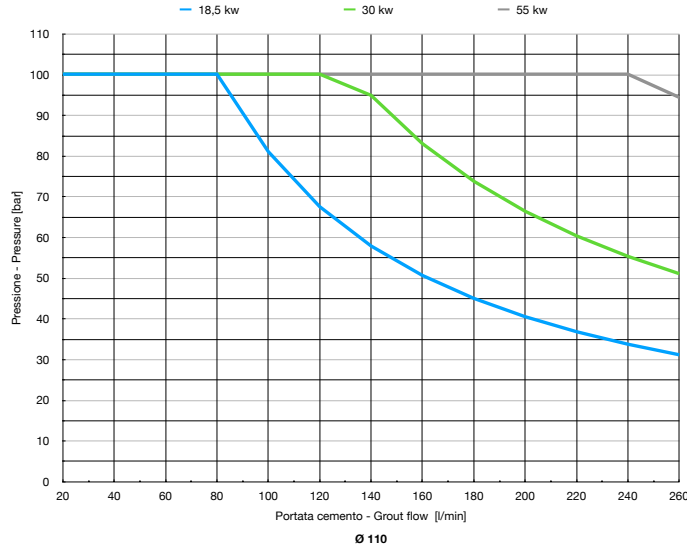
#### COMANDI

#### COMMANDS

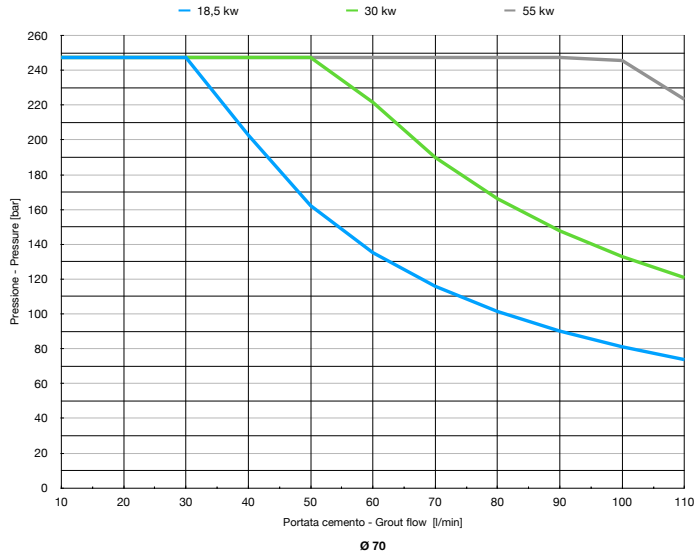
- Pulsantiera di comando iniettore a distanza

- Injection remote control panel

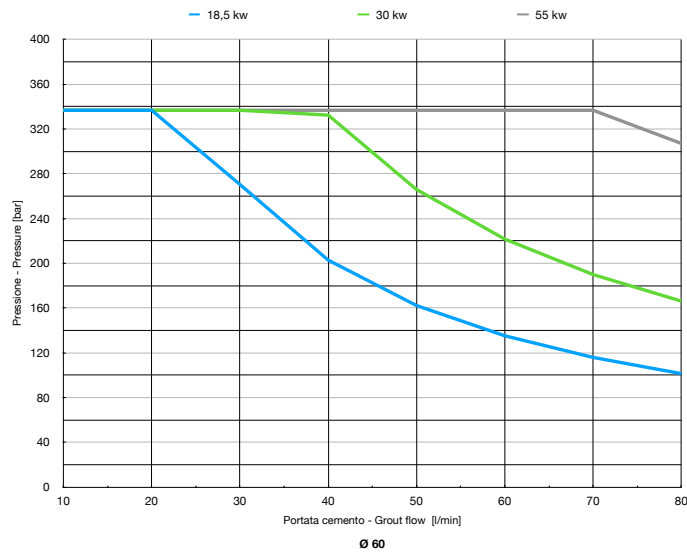
PORTATA CEMENTO - GROUT FLOW | PRESSIONE - PRESSURE | PISTONE - PISTON Ø 110



PORTATA CEMENTO - GROUT FLOW | PRESSIONE - PRESSURE | PISTONE - PISTON Ø 70



PORTATA CEMENTO - GROUT FLOW | PRESSIONE - PRESSURE | PISTONE - PISTON Ø 60



---

ROCK - SOIL TECHNOLOGY AND EQUIPMENTS

---



Branches

DRILL PAC FOUNDATIONS CANADA INC, Canada

DRILL PAC USA INC, USA

**Drill Pac S.r.l.** – Società soggetta a direzione e coordinamento di Ghella S.p.A  
Sede Legale: Via Pietro Borsieri, 2/a - 00195 Roma (RM)  
Tel. +39 06 45603.1 – Fax +39 06 45603040 – e-mail: [info@drillpac.com](mailto:info@drillpac.com)  
**Sede Operativa:** Via Grazia Cavanna, 46 - Loc. Borgonovo – 43018 Sissa Trecasali (PR)  
Tel. +39 0521 379003 – Fax +39 0521 879922 - Sito web: [www.drillpac.com](http://www.drillpac.com)